

University of São Paulo  
Faculty of Economics, Administration and Accounting  
Department of Economics  
Postgraduate Program in Economic Theory

Impacto de operações de venda a descoberto na eficiência de mercado  
The impact of short selling on market efficiency

Daniel Dantas de Castro

Supervisor: Prof. Dr. Bruno Cara Giovannetti

SÃO PAULO  
2015

Prof. Dr. Marco Antonio Zago  
Reitor da Universidade de São Paulo

Prof. Dr. Adalberto Américo Fischmann  
Diretor da Faculdade de Economia, Administração e Contabilidade

Prof. Dr. Hélio Nogueira da Cruz  
Chefe do Departamento de Economia

Prof. Dr. Márcio Issao Nakane  
Coordenador do Programa de Pós-Graduação em Economia

**DANIEL DANTAS DE CASTRO**

**Impacto de operações de venda a descoberto na eficiência de mercado  
The impact of short selling on market efficiency**

Dissertação apresentada ao Programa de Pós Graduação em Economia do Departamento de Economia da Faculdade de Economia, Administração e Contabilidade da Universidade de São Paulo, como requisito parcial para a obtenção do título de Mestre em Ciências.

**Orientador: Prof. Dr. Bruno Cara Giovannetti**

Versão Original

**SÃO PAULO  
2015**

## **FICHA CATALOGRÁFICA**

Elaborada pela Seção de Processamento Técnico do SBD/FEA/USP

Castro, Daniel Dantas de.

Impacto das operações de venda a descoberto na eficiência do mercado / Daniel Dantas de Castro. -- São Paulo, 2015.  
44 p.

Dissertação (Mestrado) – Universidade de São Paulo, 2015.  
Orientador: Bruno Cara Giovannetti.

1. Finanças - Brasil. 2. Mercado financeiro. 3. Transferência de ações. I. Universidade de São Paulo. Faculdade de Economia, Administração e Contabilidade. II. Título.

CDD – 332.0981

# Acknowledgements

The authors would like to thank FAPESP (Fundação de Amparo à Pesquisa do Estado de São Paulo), ANBIMA (Associação Brasileira das Entidades dos Mercados Financeiro e de Capitais) and NEFIN (Núcleo de Pesquisa em Economia Financeira da Universidade de São Paulo) for all support in the project.

# Resumo

Esta dissertação estuda os impactos da restrição à venda a descoberto na eficiência de preço dos ativos negociados em bolsa. O estudo utiliza uma base de dados com todos os negócios de aluguel de ação realizados no Brasil entre janeiro de 2009 e julho de 2011, bem como séries de preços em alta e baixa frequência para o cálculo dos índices de eficiência de preço.

As principais descobertas incluem o mapeamento das características de ações eficientes (mais líquidas, empresas maiores e maior book-to-market); a evidência de um prêmio de risco a ser pago ao investidor que mantém ações menos eficientes em sua carteira; a relação positiva entre eficiência de preço e venda a descoberto e o estudo de caso da "barriga de aluguel", onde verifica-se, pelo aumento da restrição às operações de venda a descoberto, um aumento da ineficiência de preço ao redor de datas de pagamento de juros sobre o capital próprio.

**Palavras-chaves:** Finanças, Empréstimo de ação e Eficiência de preço.

# Abstract

This article studies how short-sale constraints affect price efficiency in Brazilian stocks. The study uses a data set with all equity loan deals done in Brazil between January 2009 and July 2011.

The main findings are the mapping of efficiency stock characteristics (i.e. stocks with more liquidity, larger size and greater book-to-market); an evidence of efficiency risk premium paid for investors that keep price-inefficient stocks in their portfolio; a positive relation between short selling and price efficiency and the event study of tax arbitrage, where it's possible to check that price inefficiency is positively related to short selling during the payment of interest on net equity.

**Keywords:** Finance, Short Selling and Price Efficiency.

# Table of contents

<b>1</b>	<b>Introduction</b>	<b>1</b>
<b>2</b>	<b>Lending equity and its literature</b>	<b>3</b>
<b>3</b>	<b>Data and samples</b>	<b>7</b>
<b>4</b>	<b>Price efficiency index</b>	<b>8</b>
4.1	Low frequency efficiency indexes	8
4.2	High frequency efficiency indexes	10
<b>5</b>	<b>Empirical results</b>	<b>13</b>
5.1	Exercises with low frequency indexes	13
5.1.1	Stock portfolio and efficiency	13
5.1.2	Efficiency as a risk factor	14
5.1.3	Equity lending fee and price efficiency indexes – Qualitative Analysis	15
5.1.4	Loan fee and price efficiency indexes – Quantitative Analysis	16
5.2	High frequency indexes exercises	17
5.2.1	Event study of tax arbitrage	17
<b>6</b>	<b>Conclusion</b>	<b>20</b>
	<b>References</b>	<b>21</b>



## List of figures

Figure 1 – Inefficiency index over time, 3 portfolio sorted by fee . . . . .	29
Figure 2 – Event Study - Loan fee around interest on net equity payment . . . . .	31
Figure 3 – Event Study - Lended equity quantity around interest on net equity payment . . . . .	31
Figure 4 – Loan fee (left axis) and pricing error (right axis) - Closing values from intraday intervals of 15 minutes . . . . .	32
Figure 5 – Loan fee (left axis) and $ AR30 $ (right axis) - Closing values from intraday intervals of 30 minutes . . . . .	33
Figure 6 – Loan fee (left axis) and $ AR30 $ (right axis) - Average values between opening and closing from intraday intervals of 30 minutes . . . . .	34
Figure 7 – Loan fee (left axis) and $ AR15 $ (right axis) - Average values between opening and closing from intraday intervals of 15 minutes . . . . .	35

## List of tables

Table 1 – Descriptive statistics of market indexes . . . . .	24
Table 2 – Correlation between Brazilian market indexes . . . . .	25
Table 3 – Correlation between low frequency efficiency metrics . . . . .	26
Table 4 – Efficiency portfolio characteristics from 2001 to 2014 . . . . .	27
Table 5 – Efficiency sorted portfolios - Regression results . . . . .	28
Table 6 – Impacts of short selling constraints on price efficiency - Low Frequency Analysis . . . . .	30
Table 7 – Mean test around interest on net equity payment date - High Frequency Analysis . . . . .	36

# 1 Introduction

This study is about the impacts of short selling over price efficiency of stocks traded in Brazilian stock exchange market. To give base to this discussion this paper starts co-relating efficiency and other stock characteristics. There have been evidences that stocks with more efficient prices have more liquidity and belong to bigger companies with a higher trading volume than companies with less efficient prices.

Proceeding to an efficiency study between portfolios, there were evidences of the existence of a risk premium paid to investors that maintain less efficient stocks in their portfolios.

After an efficiency analysis, this paper links such concept with short selling. The results show that portfolios in which such deals are more constrained have, in average, inefficient prices.

An event study analyzes the opportunity of fiscal arbitrage called by Brazilians traders as “barriga de aluguel”, that poses an external constraint on stock lending market in reason of interest on net equity (INE) payment. It is noticeable that short selling constraints are associated with an increase in price inefficiency throughout the in-INE date, which is the last day to have the stock and qualify to receive the interest on net equity.

In synthesis, the conclusion of this paper is that short selling has a positive effect on market efficiency. The constraint of such deals results in prices being even more distant from their fundamentals.

The motivation to undertake this study came through the importance of equity lend in market deals and the theme divergence found in financial literature.

Stock lending deals generate great amount of resources. Official data from [BM&FBOVESPA \[2015\]](#) shows that in 2014 R\$735 billion came through stock lend in over 1.5 million deals, which stands for about 42% of a R\$1.73 trillion market volume. Deals had a monthly average of 290 distinct stocks.

All stocks listed at BM&FBOVESPA are eligible to be lend and all deals are made and, necessarily, registered at BM&FBOVESPA<sup>1</sup>. Brokers insert orders (for lending or renting) electronically so that deals can be done. There is also the possibility of an operation where the broker already knows both counterparts and only registers the deal over the counter at BM&FBOVESPA.

---

<sup>1</sup> Those are the main differences between Brazilian and international market: the necessity of registering, deal centralization and the BM&FBOVESPA acting as a central counterpart that ensures the delivery at the end of the contract

According to [Boehmer and Wu \[2012\]](#), the economic theory has divergent points of view about the consequences of short selling on price discovery or, generically, on market quality. In some models the agents that do such deals are well informed, they promote efficiency taking badly priced stocks to values closer to their fundamentals [[Diamond and Verrecchia, 1987](#)]. In other models, some stock borrowers follow manipulative and predatory trade strategies that result in less informative prices [[Goldstein and Guembel, 2008](#)] or cause overshooting [[Brunnermeier and Pedersen, 2005](#)].

The impact of short selling constraint is still a theme discussed these days, as it will be seen there are many more articles published in finance literature about it.

This paper is structured as follows: section [1](#) is the introduction, section [2](#) is where equity lending and its literature are discussed; section [3](#) is about the database used; section [4](#) is the explanation of efficiency index methodology; the report of empirical results is on section [5](#) and section [6](#) is the conclusion of this paper.

## 2 Lending equity and its literature

One of the options available for an investor who anxiously waits for a decrease in the value of stocks traded in the market is to sell them: the agent sells at time  $t$  to rebuy it at  $t + k$ , for a lower price, rebuilding the original portfolio and making profit by the price variation.

Even though the agent does not have the stocks that he desires to sell in his portfolio, with short selling it becomes possible: agents can get there desired stocks through a lend contract where the borrower will become, to legal matters, the stockowner, agreeing to return it to the lender until the specified date together with the settlement fee.

Stock lending deals generate great amount of resources. Official data from [BM&FBOVESPA \[2015\]](#) shows that in 2014 R\$735 billion came through stock lend in over 1.5 million deals, which stands for about 42% of a R\$1.73 trillion market volume. Deals had a monthly average of 290 distinct stocks.

All stocks listed at BM&FBOVESPA are eligible to be lend and all deals are made and, necessarily, registered at BM&FBOVESPA<sup>1</sup>. Brokers insert orders (for lending or renting) electronically so that deals can be done. There is also the possibility of an operation where the broker already knows both counterparts and only registers the deal over the counter at BM&FBOVESPA.

It is interesting to notice that there is a slight difference between equity lending and short selling. Equity lending is a deal registered in the stock market where a stock borrower and lender set contract terms such as: underlying asset, deadline and fee rate. This is where short selling starts, but not all equity lending contracts result in short selling. For this to happen the borrower needs to sell the borrowed equities on the spot market what not always occurs, as shown in the tax arbitrage event. Thus, not all the equity lending implies a short selling.

According to [Boehmer and Wu \[2012\]](#), the economic theory has divergent points of view about the consequences of short selling on price discovery or, generically, on market quality. In some models the agents that do such deals are well informed, they promote efficiency taking badly priced stocks to values closer to their fundamentals [[Diamond and Verrecchia, 1987](#)]. In other models, some stock borrowers follow manipulative and predatory trade strategies that result in less informative prices [[Goldstein and Guembel, 2008](#)] or cause overshooting [[Brunnermeier and Pedersen, 2005](#)].

<sup>1</sup> Those are the main differences between Brazilian and international market: the necessity of registering, deal centralization and the BM&FBOVESPA acting as a central counterpart that ensures the delivery at the end of the contract

Bai et al. [2006] study the impact of constraints on equity lending in stock pricing and market efficiency. For that purpose, they build a general equilibrium model with two types of agents: those who negotiate to share risks and those who speculate based on private information. Among the main conclusions is the one, where the authors verify that limitations of equity lending to those agents that possess private information can increase market uncertainty (price no longer reflects available information) what could generate an abrupt drop of stock price with raise in volatility.

Beyond theoretical analysis, empirical analysis show interesting results.

Using a database with all equity lending deals done in Brazil from January 2009 to July 2011, Chague et al. [2014b] verified the effects of short selling constraints in stock prices. The authors tested two hypothesis with the information about real alterations on the equity lending offer curve: (i) if equity lending constraints cause overpricing of underlying asset and (ii) if such effect is growing with the increase dispersal opinions among investors. The results confirmed both hypothesis and, are maintained despite variations on the specified proposals.

With the same database, Chague et al. [2013] showed evidences that agents who use equity lending can forecast the drop of a taken stock price within a short term. After that, the investors were classified by type, noticing that private and institutional investors<sup>2</sup> were able to anticipate future earnings, differently from foreign investors. The magnitude for such prediction is five times bigger in individual investors than in institutions. In an event study, it is noticed that equity lending operations performed by individual investors have a higher than normal activity on days prior to the announcement of a negative fact. This may show the use of privileged information by those investors inside Brazilian market.

In another article, Chague et al. [2014a] concluded that agents executing equity lending deals are informed, although it is not possible for them do lend the desired quantity, due to the constraints on the limits of tradings<sup>3</sup>. The constrained stock price does not reflect the entire information on the market.

One way of analyzing the impact of short selling on the market is through efficiency index. This was the method used by Saffi and Sigurdsson [2011] for a stock panel of 26 countries. Initially a variety of efficiency indexes have been calculated for those stocks, then the efficiency indexes (dependent variable) were regressed against lending offers and contract fee rates (explainable variables), they are treated as proxies for stock lending constraint, and controlled by variables such as execution costs, liquidity, company

<sup>2</sup> According to authors, the last case is contrary to evidences obtained from American market

<sup>3</sup> Trading limit is established by BM&FBOVESPA.

size, turnover and so on. This is followed by the analysis of significance and coefficient magnitude.

The efficiency index analysis, based on econometric test made by the authors, lead to the conclusion that a higher level of equity lending offers (less short selling constraint) is associated with an increase in the speed of how information is incorporated to prices and, consequently, on the price efficiency of stocks.

With data from the United States and taking into consideration efficiency indexes, [Boehmer and Wu \[2012\]](#), analogously, find evidences that a higher volume of equity lending (or less short selling constraints) is associated with a higher informational efficiency of prices. In other words, the information is quickly incorporated to prices when short selling is more active. The results don't show evidences that such operations manipulate the market or destabilize prices.

Efficiency indexes used by those authors can be divided into high and low frequency. High frequency indexes are built with information coming from tradings in the spot market, and then they are used to measure the relative informational efficiency of prices, according to the methodology of [Hasbrouck \[1993\]](#) and [Boehmer and Kelley \[2009\]](#). The low frequency indexes, based on daily and weekly returns<sup>4</sup> of stocks on spot market, make it possible to try out the speed to which public information is incorporated to prices. Those indexes were calculated as established by [Hou and Moskowitz \[2005\]](#).

[Boehmer and Wu \[2012\]](#) also analyzed price changes after the announcement of an unexpected and positive profit. It has the tendency to generate abnormal returns on the weeks after the event, as previously documented by [Ball and Brown \[1968\]](#). In other exercise, the authors also carried out analysis to check if there are more equity lending deals on days where extremely negative returns are lately reversed, which could indicates its speculative effect. The results found validate the positive relation between short selling constraint and the raise in price inefficiency, but they do not indicate a predatory effect of these deals when market is falling.

International literature has recently turned their focus to the effects of short selling constraint in firm real decisions, going beyond the financial concept of price efficiency. [Massa et al. \[2014\]](#) test if short selling has a disciplinary role for firm managers, which implies in a reduction of earning management<sup>5</sup>. As a result, the authors have documented a negative relation between these variables and they reinforce that short selling has an external governance effect controlling managers. Using the same principle, [Grullon et al. \[2015\]](#) considered the period when short selling was banned in the United States in order

---

<sup>4</sup> Returns are calculated taking into consideration a serial of daily or weekly prices closing.

<sup>5</sup> The act of deliberately induce the accounting statements of a firm to make private earnings.

to verify if such constraint has had an impact on firm decision making. The authors found that the ban end caused a decrease on stock prices, issued shares and investments, especially on small firms. This effect links short selling to the real side of economy. The authors associated this decrease on stock prices to a rise in price efficiency in that period.

As shown, the international literature indicates a positive relation of short selling and price efficiency, however its data does not reflect the totality of trades done with equity lending, once relevant markets, such as the U.S., have a decentralized market. Regarding the Brazilian market, where there is a centralization of deals, it is possible to find evidences that short sellers receive information about the market, but they are constrained. For the Brazilian market, academic papers showing the relationship between short selling and price efficiency are yet unknown.



### 3 Data and samples

This section exposes the database used in this paper.

#### **Equity lending database**

This database contains data from daily deals of equity lending registered in BM&FBOVESPA system. It represents the totality of deals made in the Brazilian market from January 2009 to July 2011.

For each deal, there is information about underlying asset, number of traded stocks, equity lending fee and commission paid by lenders and borrowers. The type of borrower is also available. The main types are funds (mutual or hedge), foreign investors, pension funds and individual investors. It is also possible to differentiate over-the-counter deals.

#### **Database to calculate efficiency indexes**

To calculate the efficiency indexes of stock, two price databases were created. The first one has the daily closing price already adjusted by the earnings<sup>1</sup> of stocks traded at BM&FBOVESPA from 2000 to 2014, as well as daily volume of trades. With this data the low frequency indexes described in the section 4 were calculated. The second price database, used to calculate high frequency indexes, contains closing, opening, maximum and minimum prices of each stock at 15 minutes intervals<sup>2</sup>. Through this way, daily price in high frequency from January 2009 to July 2011 were made available<sup>3</sup>. Other stock information such as book/market value and outstanding stocks came from Economática data base.

#### **Earnings database**

This paper also uses a database with all the payment dates of stock earnings from January 2009 to July 2011. This database contains information about announcement and dividends date<sup>4</sup>, stock, value and the kind of earnings paid (dividend or interest on net equity).

---

<sup>1</sup> Dividends, interest on net equity, subscription, bonus stock, split, inplit.

<sup>2</sup> In this case, around 32 observations a day *per* ticker.

<sup>3</sup> Price data came from Bloomberg platform.

<sup>4</sup> The last day possible to buy stocks in spot market to have earning rights.

## 4 Price efficiency index

The efficiency analysis is done based on indexes available in literature. Below, there is a description of their methodology.

### 4.1 Low frequency efficiency indexes

The low frequency efficiency indexes of prices generally follow what is stated on the Finance literature<sup>1</sup> which considers the returns of stocks traded in open market as something unpredictable.

As defined by Fama [1970], if weak efficiency is valid, future price is not determined by information included in its time series, in other words, past price variations do not allow any implication about future return movements. In this case, the less predictable the stock return is, the more efficient its price will be. One way of analyzing price efficiency of a stock is to verify the speed in which the information available to agents is fully incorporated into stock prices. A stock whose information is promptly incorporated has a more informative price and, consequently, is more efficient.

Statistically, it is possible to model efficient prices as a random walk<sup>2</sup>. In this specification, the weak efficiency is fully satisfied in a simple way. Overall, efficiency indexes are metrics that quantify how distant the return of a stock is from a white noise.

#### **Cross-correlation** ( $\rho^{Cross}$ )

This efficiency index correlates stock returns and lagged returns of a market index. Once market lagged returns contain information already available to agents, it's expected of an efficient stock to have already incorporated those information in its price, which means that its returns at time  $t$  shouldn't be affected by lagged market returns. The contemporary correlation exists, but once information is promoted and assimilated by agents, it should disappear completely.

$$\rho^{Cross} = Corr(r_{i,t_w}, r_{m,t-1_w})$$

$$EfficIndex = abs(\rho^{Cross})$$

With:

$r_{i,t_w}$ , weekly return in time  $t$  of stock  $i$ ;

$r_{m,t-1_w}$ , weekly return in  $t - 1$  of local Market index.

<sup>1</sup> Look Boehmer and Wu [2012] and Saffi and Sigurdsson [2011].

<sup>2</sup>  $p_t = p_{t-1} + \epsilon_t$ ; with:  $p_t$  stock price in  $t$  e  $\epsilon_t$  a white noise  $\sim (\mu, \sigma_\epsilon)$

The more efficient the price is, the closer to zero the index will be.

**First order autocorrelation ( $\rho^1$ )**

This index correlates stock return and its own one period lagged return (first order autocorrelation). Again, the closer to zero this correlation is, the more efficient the price, based on the same reasons listed in the previous index. News that influence a stock return should be incorporated instantly on prices. A delay, even for one period, generates the possibility of arbitrage and prediction of returns. Furthermore, the absence of first order autocorrelation is a direct statistical result of the hypothesis that return behaves as a white noise.

$$\rho^1 = Corr(r_{i,t_w}, r_{i,t-1_w})$$

$$EfficIndex = abs(\rho^1)$$

With:

$r_{i,t_w}$ , weekly return in  $t$  of stock  $i$ ;

$r_{i,t-1_w}$ , weekly return in  $t - 1$  of stock  $i$ .

The more efficient the price is, the closer to zero the index will be.

**Low-frequency informational efficiency: R2 ratio ( $D1$ )**

For this index, the stock daily returns are regressed on market returns and its lags. For a price efficient stock, it is expected just a little contribution of market lags to the explanatory power of regression, measured by  $R^2$ .

$$r_{i,t} = \alpha_i + \beta_i r_{m,t} + \sum_{n=1}^5 \delta_{i,-n} r_{m,t-n} + \epsilon_{i,t} \quad (4.1)$$

$$r_{i,t} = \alpha_i + \beta_i r_{m,t} + \epsilon_{i,t} \quad (4.2)$$

With:

$r_{i,t}$ , daily return of stock  $i$  in time  $t$ ;

$r_{m,t}$ , daily return of local market index in  $t$ ;

$r_{m,t-n}$ , daily return of local market index lagged by  $n$  periods;

(4.1), unrestricted model;

(4.2), restricted model.

The efficiency index is given by:  $D1_i = 1 - \frac{R^2_{Restricted}}{R^2_{Unrestricted}}$

The more efficient the price is, the closer to zero the index will be.

**Low-frequency informational efficiency: Betas ratio ( $D2$ )**

Using equations (4.1) and (4.2), this index analyzes the magnitude of regression coefficients; even if lagged variables add explanatory power, it is expected for contemporaneous returns to have a bigger impact than lagged ones ( $\delta_{i,-n}$  should not be significantly different from zero if price is a random walk).

$$D2_i = \frac{\sum_{n=1}^5 |\delta_{i,-n}|}{|\beta_i| + \sum_{n=1}^5 |\delta_{i,-n}|}$$

With:

$n$ , lagged period of market returns;

$\delta_{i,-n}$ , coefficient of lagged market returns in relation to return of the stock  $i$ ;

$\beta_i$ , coefficient of actual market return.

The more efficient the price is, the closer to zero the index will be.

The four price efficiency indexes calculated have also shown a positive correlation and, in many cases, a high one. This indicates that indexes are not divergent in identifying efficient stocks. As each index is unique, calculated according to a particular methodology and with no perfect correlation between them, there is an indication that each index collects a particular aspect of price efficiency (market correlation, autocorrelation, explanatory power and coefficient magnitude). Index correlations are described on table 3.

## 4.2 High frequency efficiency indexes

**Pricing Error:**  $\frac{\sigma_s^2}{\sigma_p^2}$

To calculate pricing error, it is assumed that stock prices can be described as an ARIMA(p,1,q) model with drift:

$$p_t = p_{t-1} + \delta + \sum_{j=0}^{\infty} \psi_j \epsilon_{t-j} \quad (4.3)$$

With:

$p_t$ , stock price in  $t$ ;

$\delta$ , drift;

$\epsilon_{t-j}$ , residual value lagged by  $j$  periods.

Hasbrouck [1993] assumes that the observed price of a deal done in time  $t$ ,  $p_t$ , can be decomposed in an efficient part,  $m_t$ , and in an error of price estimation,  $s_t$ , as shown next equation:

$$p_t = m_t + s_t$$

Using the decomposition of [Beveridge and Nelson \[1981\]](#), there is:

$$p_t = m_t + s_t \quad (4.4)$$

$$m_t = m_{t-1} + \delta + \psi(1)\epsilon_t \quad (4.5)$$

$$s_t = \psi^*(L)\epsilon_t = \psi_0^*\epsilon_t + \psi_1^*\epsilon_{t-1} + \psi_2^*\epsilon_{t-2} + \psi_3^*\epsilon_{t-3} + \dots \quad (4.6)$$

For this purpose, it's used:

$$\begin{aligned} \psi_0^* &= 1 \\ \psi(1) &= \sum_{j=0}^{\infty} \psi_j \\ \psi_k^* &= - \sum_{j=k+1}^{\infty} \psi_j \end{aligned}$$

It is easy to see that through the combination of (4.4), (4.5) and (4.6), equation (4.3) is rebuilt<sup>3</sup>.

Price decomposition has interesting properties: (i) The permanent component ( $m_t$ ) is a random walk that satisfies the concept of weak efficiency seen on [Fama \[1970\]](#); (ii) The cyclic component ( $s_t$ ) carries everything that deviates the stock price from its efficient component, that is the reason of the name *pricing error*; (iii) The bigger the *pricing error* is, higher the price inefficiency will be; (iv) Once pricing error mean does not contribute to discussion<sup>4</sup>, the variance ( $\sigma_s^2$ ) is calculated and, to compare the index among diverse stocks available in the market, authors use the ratio between pricing error variance and stock variance,  $\frac{\sigma_s^2}{\sigma_p^2}$ , as the efficiency index; (v) in this conditions, pricing error is inversely proportional to price efficiency; the lower the index is, more efficient the stock price will be.

In the original article, the authors had a database with the prices of each stock transaction. Here, only values taken at a 15 minutes intervals were used. It may differ from the original paper, on the other hand, it demands less computing capacity to be handled with.

#### **Autocorrelation:** $|AR30|$

High frequency efficiency index  $|AR30|$  were calculated for each stock as the absolute value of first order autocorrelation at a 30 minutes interval. Using this metric [Boehmer and Wu \[2012\]](#) shown that their results were qualitatively identical to autocorrelations calculated at 5 and/or 10 minutes intervals.

Since the database have granularity of 15 minutes, the  $|AR30|$  and  $|AR15|$  were

<sup>3</sup> Proof could be checked in Cockcrane XXX

<sup>4</sup>  $E(s_t) = 0$ , by construction.

calculated with closing and opening prices and the simple mean between closing and opening price at the interval.

## 5 Empirical results

### 5.1 Exercises with low frequency indexes

#### 5.1.1 Stock portfolio and efficiency

To better understand what is behind price efficiency and to map common characteristics between efficient and inefficient stocks, the follow exercise has been done: (i) it is calculated efficiency index of stocks in a particular year  $t$ ; with these values, the stocks are ranked; (ii) stocks are then divided into quartiles by its efficiency index; each quartile becomes a portfolio (P1, P2, P3 and P4), being P1 composed of stocks of the most efficient quartile and P4 of stocks from the less efficient quartile<sup>1</sup>; (iii) these portfolios are kept from the first to the last working day of the year  $t + 1$ ; (iv) at the beginning of  $t + 2$ , the portfolios are rebalanced based on indexes calculated over the period  $t + 1$ . The process is taken over until the end of the sample (2014).

As a result, P1 is a portfolio that reflects the return of the most efficient stocks traded in BM&FBOVESPA and P4 is the portfolio made by the less efficient ones. This study is about similarities and differences among those portfolios.

Table 4 shows average values per year of diverse metrics for each portfolio. Systematically, P1 stocks (more efficient) are more liquid<sup>2</sup> than P4 stocks, indicating that efficiency and liquidity follow the same direction. There is an illiquidity peak in 2008 and 2009, reflecting directly the financial crisis of that period. In those years specifically, the entire market gets more illiquid and the difference of liquidity between P1 and P4 rises.

P4 (less efficient) shows a smaller value of Book-to-Market (Book firm value over Market firm value) if compared to P1 (more efficient). It indicates a positive correlation between stocks *value* and efficiency. In a moment of crises, when all stocks lose market value (becoming more *growth*), the book-to-market ratio difference between portfolios was significantly reduced.

The quantity of deals increases year after year, indicating a market trend. Efficient stocks are most heavily traded. This analysis, however, can be mistaken for liquidity analysis as such effects cannot be detached in the table shown.

The growth of market value and traded volume are affected by inflation of the period once these are nominal variables. Yet it is noticeable the consistent difference between the values of P1 and P4 over the years: efficiency is linked to higher market value

<sup>1</sup> In this manner, each portfolio has the same number of stocks in its composition. Stocks were equally weighted for portfolio construction.

<sup>2</sup> The liquidity Index were based on [Acharya and Pedersen \[2004\]](#). The source is NEFIN web site.

and larger traded volume.

### 5.1.2 Efficiency as a risk factor

Beyond classics SMB, HML, Momentum, and so on, [Harvey et al. \[2014\]](#) do an interesting revision of risk factors found in asset pricing literature. The authors document until April, 2014, 312 alleged idiosyncratic risk factors described in articles and working papers. If there are so many risk factors, will price efficiency also be one? This idea is developed afterwards.

Take two stocks with different price efficiency, but everything else the same. The demanded return between them should be distinct: agents require a higher expected return for the less efficient stock once, with it, there is the risk of having a stock with a less informative price in his investment portfolio, which means, with a price detached from the fundamentals of the company or, in general, that does not reflect all information available in market. This higher expected return is a compensation for the risk of efficiency taken by such agent.

Based on such hypothesis, the excess of return of each efficient sorted portfolio was regressed<sup>3</sup> on risk factors already documented in literature<sup>4</sup>. Results were also reported to portfolio P4-P1, which is a zero cost long-short strategy: P4 portfolio is bought and P1 portfolio is short sold<sup>5</sup>, it captures the difference of efficiency between stocks available on market.

The full model is described as follows:

$$r_{i,t}^e = \alpha + \beta_1 r_{m,t}^e + \beta_2 r_{SMB,t} + \beta_3 r_{HML,t} + \beta_4 r_{WML,t} + \beta_5 r_{IML,t} + \epsilon_t \quad (5.1)$$

With:

$r_{i,t}^e$  is the excess return of the portfolio  $i$ ;

$r_{m,t}^e$  is the excess return of market portfolio;

$\epsilon_t$  is an error term;

$t$  indexes time;

$r_{SMB,t}$  is the return of a zero cost portfolio bought in small companies and sold in bigger ones;

$r_{HML,t}$  is the return of a zero cost portfolio bought in companies with high Book-to-market and sold in companies with low Book-to-Market;

$r_{WML,t}$  is the return of a zero cost portfolio bought in winner companies, which are stocks

<sup>3</sup> The excess of return is calculated by taking the risk free return of portfolios returns.

<sup>4</sup> The three Fama and French factors were used (market excess return, SMB and HML), plus momentum and illiquidity. All factors are available on <http://www.nefin.com.br>.

<sup>5</sup> For the purpose of this exercise, transaction costs involved were ignored



that have shown the highest return in the last year and, sold in loser companies, whose stocks have shown the lowest return in the same period and

$r_{IML,t}$  is the return of a zero cost portfolio bought in illiquid companies and sold in liquid companies.

Results are presented on table 5. Notice that more efficient portfolios have bigger market beta, besides, consistent with the analysis done in section 5.1.1, it is found a smaller risk SMB (P1 is made of bigger stocks) and IML (P1 is made of more liquid stocks); and bigger HML risk (P1 is made of stocks with larger Book-to-market). When analyzing momentum coefficient (WML), it appear to be lower in P1 than in P4: while the more efficient portfolio (P1) is composed of stocks with a lower return on last year, in P4 there is a balanced proportion between winners and losers, in average.

Alphas (constant term) of P3 and P4 regressions are significantly different from zero. This shows an extraordinary gain controlled by the main risk factors of literature, what may indicate the existence of a risk premium linked to the efficiency of stocks kept on portfolio: price efficiency might be itself a relevant risk factor.

### 5.1.3 Equity lending fee and price efficiency indexes – Qualitative Analysis

So far, the results regarding efficiency have been presented, without any direct bond with equity lending. The study of this relation begins with a qualitative analysis.

Literature evidences described in section 2 point out a positive relation between short selling constraints and stock price inefficiency. One observable variable that indicates short selling constraint is the average fee in which equity lending deals are settled: if the fee is too high, some borrowers might be constrained and end up out of the market. When they do not participate, they fail to incorporate private information to stock prices, or lose arbitrage opportunities; if prices do not reflect all information, or if there are opportunities of arbitrage, it is said that such stock is not efficient.

The experiment to start the analysis of price efficiency and equity lending fee was conducted as follows: (i) Database stocks are divided according to the average monthly value of fees charged by equity lending deals, thus creating three portfolios with monthly balancing (portfolio with high/medium/low cost of equity lending, which mean, respectively stock portfolios whose short selling deals are little/medium/very constrained); (ii) It is calculated the daily returns of portfolios over time (January 2009 to July 2011)<sup>6</sup>; (iii) It is monthly calculated the low frequency efficiency indexes ( $D1$  and  $D2$ ) of these

<sup>6</sup> Here, differently from previous exercises where data was taken from 2000 to 2014, the sample was restrict to a smaller period, according to the equity lending data available.

three portfolios; (iv) efficiency indexes are consolidated by their mean in an “inefficiency index”: the higher the value, higher the inefficiency.

The graphic analysis of figure 1 shows that the portfolio with constrained stocks has its price less efficient than others both in mean as in several months of sample. This exercise indicates a positive relation between short selling constraint and price inefficiency; however, this relation is not yet properly quantified, which is going to be done in the following exercises.

#### 5.1.4 Loan fee and price efficiency indexes – Quantitative Analysis

To try to quantify the impact of short selling constraint on price efficiency, some regressions were made using the following panel data model:

$$EffIndex_{i,t} = \beta_0 + \beta_1 LoanFee_{i,t} + \gamma X_{i,t} + \alpha_i + \alpha_t + \epsilon_t \quad (5.2)$$

With:

$EffIndex_{i,t}$  is the low frequency efficiency indexes ( $D1$  or  $D2$ ) calculated to stock  $i$  in month  $t$ ;

$LoanFee_{i,t}$  is the mean fee of equity lending, used as proxy for short selling constraint;  $X_{i,t}$  are control variables, such as company size, number of days in a month that the stock was not traded<sup>7</sup> and a dummy that assumes value 1 if there has been a payment of interest on net equity in that month and

$\alpha_i$  and  $\alpha_t$  are fixed effects of stock and month, respectively.

All variables were standardized to have zero mean and standard deviation of 1.

The results can be seen on table 6. It is perceptible in all regressions that an increase of 1 standard deviation on equity lending fee (an increase on short selling constraint) rises values of the efficiency index (what means an increase in price inefficiency). It is interesting to note that stock illiquidity ( $ret0\_norm$ ) has a negative significant relation with efficiency. The dummy used does not show significance in any specification: the average price efficiency does not change either being the month for interest on net equity payment or not. This is an interesting (no) result, because it leads to believe that the inefficiency generated by tax arbitrage, if it exists, must be restricted to days around this event. This is exactly the hypothesis detailed and studied on next section.

<sup>7</sup> This variables control the size effects of companies and their illiquidity, which with short selling constraint can influence price efficiency of stocks.

## 5.2 High frequency indexes exercises

### 5.2.1 Event study of tax arbitrage

During the period contained in the database, it was common in the market a type of operation called as "*barriga de aluguel*" by Brazilian traders. This is a tax arbitrage operation in which investment funds borrow stocks from individual entities for time enough to receive interest on net equity payments made by the firm company whose stock has been lent<sup>8</sup>. These earnings are received by funds without income tax discount<sup>9</sup>, but when they return the stocks to the lender, the interest on net equity is subject to Brazilian 15% capital gains tax. This amount is appropriated by funds themselves and not paid to the government.

It was verified that this type of operation disturbed temporarily the equity lending market around days of interest on net equity payment. As it will be demonstrated on graphics below, both the average loan fee and the amount of equity stocks lent increased significantly on the period.

The methodology used in figures 2 and 3 is described as follows: with the database of gain earnings (dividend and interest on net equity), an event study was carried out on dates when interest on net equity is paid. Day 0 refers to in-INE date, which is the last day that a stock could be bought on spot market with the right to receive interest on net equity. Due settlement in D+3 in this market, the definition of who receives the profit value will be based on stocks held in custody on day 3 (3 days after in-INE date).

There is a mismatch of deadlines between equity lending and spot market. Since equity lending settlement takes place on D+0, even if a fund borrow a stock on 3, it will be to legal matters the one entitled to receive the value of interest on net equity paid. At the end of the contract period, it must return to the lender the stock, interest on net equity and equity lending fee settled. Lending an equity on 3, receiving a tax-free gain and returning it at 4 tax-deducted is excellent to funds that appropriate the 15% taxation without being exposed to stock price risk<sup>10</sup>.

The only way of sharing such tax gain with the lender is through loan fee, which increases significantly at the period. Figure 2 shows the average loan fee done with stocks around dates where interest on net equity was paid. Figure 3 shows the ratio of the

<sup>8</sup> Equity lending borrowers also acquire the right to receive eventual earnings paid in the period that they still have the stocks in their portfolio.

<sup>9</sup> During this period, funds were not taxed over profits from interest on net equity payment.

<sup>10</sup> It happens because the fund does not sell the stocks it borrows, what is done in a regular short selling deal. It returns the exact same papers that it has borrowed, without being exposed to its price variation.

average amount of shares lent over the amount of stocks available to be traded. Besides the increase in loan fee, there is an increase on equity lending amount, which shows that individual investors also become more active as lenders who take advantage of this arbitrage opportunity. However, risk analysis is slightly distinct for these investors: the price risk of a stock is still existent, even when the stock is lent. In addition, this option of selling the stocks in spot market is put aside while they are being lent.

This kind of operation, however, ended at the beginning of 2015 due to law 13.043 enacted in November 2014<sup>11</sup> which established that interest on net equity was subject to 15% of income tax even for investment funds.

Other studies have shown this market alteration. Saffi and Sigurdsson [2011], for example, recognized the anomaly on their database of equity lending and opt to remove all deals that are at least three weeks away from dividend payment on counties in which this kind of fiscal arbitrage is possible. This way, their results do not suffer influence from this uniqueness.

In Brazil, this opportunity of arbitrage increases equity lending deals in about five times and raises the equity lending fee by almost 100%. Through, it is clear that the entire market turn its attention to fiscal arbitrage in this period, leaving the investor that really wants to short sell extremely constrained.

As exposed, in this period there is a short selling constraint that is not related to (i) any fundamental situation of the firm (it is only necessary to pay interest on net equity); (ii) the spot market price of underlying asset or (iii) any macroeconomic indicator. It is an ideal exogenous event for the study of the constraint impact of short selling on price efficiency.

Results point to a positive relation between short selling constraint and price inefficiency in the period. It is not only equity loan fee and the amount of equity lent that shifts around the period of interest on net equity payment; inefficiency also rises significantly, as shown on figures 4 and 5.

Those images show the relation between short selling constraint and market efficiency. In figure 4 pricing error was used as a measure of high frequency inefficiency index. Figure 5 uses  $|AR30|$  index, calculated with the closing values of intervals.

Critiques can be made when working with high frequency data from markets that are not so liquid. The "bid-ask bounce"<sup>12</sup> induces a negative correlation between returns

<sup>11</sup> See [Brasil, 2014]

<sup>12</sup> There is a natural negative correlation between sequential returns of a stock when calculated by trade: when there is an order that hits a purchase offer, price usually falls, generating a negative return; the next order usually hits a sale order, making a positive return in relation to the price of

in high frequency analysis. To mitigate this point, the returns are calculated using the average value between opening and closing price of the interval. The results can be evaluated on images 6 (for the 30 minute interval) and 7 (for the 15 minute interval). Volatility of efficiency index is reduced, which indicates that "bid-ask bounce" is a problem to be taken into consideration in this analysis. On these images, the increase of inefficiency at the period is even more evident.

Beyond graphic analysis, a mean test was made around interest on net equity payment date for each of graphics shown. The results are reported in table 7. Constant value represents the price efficiency index mean on days that are not explicitly tabulated. Coefficient values are the difference between the efficiency index for that specific day and the constant.

Using Beveridge Nelson pricing error index (column 1), the evidence of an inefficiency raise in D+3 is significant at 10% level. For  $|AR30|$  index with closing values (column 2), D+3 coefficient is positive and significant at 5% level. In line with the discussion made, to reduce autocorrelation generated by construction on high frequency data ("bid-ask bounce"), when using the mean value between opening and closing prices of data interval to calculate  $|AR30|$  (column 3) the coefficient is positive and significant at 1% level. The same happens with  $|AR15|$  (column 4).

This way, it's possible to conclude that the tax arbitrage was a distortion on market that constrains short sellers and causes a significant reduction of market efficiency at least at the third day after in-INE date.

---

the last deal. This means that usually positive returns are followed by negative ones. Through this micro-movements, apparently inefficient on a millisecond analysis, the information is incorporated to price.

## 6 Conclusion

As exposed, the relation between efficiency and other stock characteristics was studied, as well as its behavior over time. Evidences were found that stocks that are more efficient are more liquid, more *value*, mostly traded, and belong to bigger companies and with a higher traded volume than stocks with less efficient price.

Evidences also shown the possibility of paying a risk premium to investors that maintain less efficient stocks in their portfolio. This premium exists even if controlled by the main risk factors documented in literature: market premium, SMB, HML, momentum and liquidity.

Besides efficiency analysis carried out, there are evidences of positive relation between price efficiency and short selling. On average, constrained portfolios have more inefficient prices: a raise of 1 standard deviation on the loan fees leads to an increase of approximately 0.04 standard deviations on low frequency efficiency indexes<sup>1</sup>.

Considering days around payment of interest on net equity that created until 2014 an opportunity of fiscal arbitrage and constrained exogenously the market of short selling, it was found that short selling constraint is associated to an increase in price inefficiency. This analysis has been made using high frequency data.

In summary, the conclusion is that short selling constraints have a negative effect on market efficiency, consequently, constraining such deals makes prices further from their fundamentals.

---

<sup>1</sup> The higher the index value is, more inefficient is the price will be

## References

- Viral V. Acharya and Lasse H. Pedersen. Asset pricing with liquidity risk. *CEPR Discussion Paper*, No. 4718, 2004. URL <http://ssrn.com/abstract=646661>.
- Yang Bai, Eric C. Chang, and Jiang Wang. Asset prices under short-sale constraints, 2006.
- R. Ball and P. Brown. An empirical evaluation of accounting income numbers. *Journal of Accounting Research*, 6:159–178, 1968. URL <http://www.uic.edu/classes/actg/actg593/Readings/Capital-Markets/Ball,-R,-P-Brown;-An-Empirical-Evaluation.pdf>.
- Stephen Beveridge and Charles R. Nelson. A new approach to decomposition of economic time series into permanent and transitory components with particular attention to measurement of the ‘business cycle’. *Journal of Monetary Economics*, 7(2): 151–174, 1981. URL [http://www.uh.edu/~cmurray/courses/econ\\_7395/Beveridge%20Nelson.pdf](http://www.uh.edu/~cmurray/courses/econ_7395/Beveridge%20Nelson.pdf).
- BM&FBOVESPA. Estatísticas btc. 2015. URL <http://www.bmfbovespa.com.br/BancoTitulosBTC/Estatisticas.aspx?Idioma=pt-br>.
- Ekkehart Boehmer and E. Kelley. Institutional investors and the informational efficiency of prices. *Review of Financial Studies*, 22:3563–3594, 2009. URL <http://ssrn.com/abstract=972620>.
- Ekkehart Boehmer and Juan (Julie) Wu. Short selling and the price discovery process. *Review of Financial Studies*, 26:287–322, 2012. URL <http://ssrn.com/abstract=972620>.
- Brasil. Lei n 13.043, de 13 de novembro de 2014. 2014. URL [http://www.planalto.gov.br/ccivil\\_03/\\_ato2011-2014/2014/Lei/L13043.htm](http://www.planalto.gov.br/ccivil_03/_ato2011-2014/2014/Lei/L13043.htm).
- M. Brunnermeier and L. Pedersen. Predatory trading. *Journal of Finance, American Finance Association*, 60(4):1825–1863, 2005. URL [http://pages.stern.nyu.edu/~lpederse/papers/predatory\\_trading.pdf](http://pages.stern.nyu.edu/~lpederse/papers/predatory_trading.pdf).
- Fernando Chague, Rodrigo De-Losso, Alan De Genaro, and Bruno Giovannetti. Short-selling and inside information. *Departamento de Economia FEA-USP. Working Paper Series*, 06, 2013. URL <http://ssrn.com/abstract=2297342>.

- Fernando Chague, Rodrigo De-Losso, Alan De Genaro, and Bruno Giovannetti. Short-sellers: Informed, but restricted. *Journal of International Money and Finance*, 2014a. URL <http://ssrn.com/abstract=2291235>.
- Fernando Chague, Rodrigo De-Losso, Alan De Genaro, and Bruno Giovannetti. Testing the effects of short-selling restrictions on asset prices. *Departamento de Economia FEA-USP. Working Paper Series*, 2014b. URL [http://papers.ssrn.com/sol3/papers.cfm?abstract\\_id=2135285](http://papers.ssrn.com/sol3/papers.cfm?abstract_id=2135285).
- D. Diamond and R. Verrecchia. Constraints on short-selling and asset price adjustment to private information. *Journal of Financial Economics*, 18(3):277–311, 1987. URL [http://dx.doi.org/10.1016/0304-405X\(87\)90042-0](http://dx.doi.org/10.1016/0304-405X(87)90042-0).
- Eugene F. Fama. Efficient capital markets: A review of theory and empirical work. *The Journal of Finance*, 25(2):383–417, 1970. URL <http://dx.doi.org/10.1111/j.1540-6261.1970.tb00518.x>.
- I. Goldstein and A. Guembel. Manipulation and the allocational role of prices. *Review of Economic Studies*, 75:133–164, 2008. URL <http://finance.wharton.upenn.edu/~itayg/Files/manipulation-published.pdf>.
- Gustavo Grullon, Sébastien Michenaud, and James P. Weston. The real effects of short-selling constraints. *Review of Financial Studies*, 2015. URL <http://rfs.oxfordjournals.org/content/early/2015/02/12/rfs.hhv013.abstract>.
- Campbell R. Harvey, Yan Liu, and Heqing Zhu. ... and the cross-section of expected returns. pages 159–178, 2014. URL <http://ssrn.com/abstract=2249314>.
- Joel Hasbrouck. Assessing the quality of a security market: a new approach to transaction cost measurement. *The Review of Financial Studies*, 6(1):191–212, 1993. URL <http://www.uic.edu/classes/actg/actg593/Readings/Capital-Markets/Ball,-R,-P-Brown;-An-Empirical-Evaluation.pdf>.
- K Hou and T. Moskowitz. Market frictions, price delay, and the cross-section of expected returns. *Review of Economic Studies*, 18:981–1020, 2005. URL <http://rfs.oxfordjournals.org/content/18/3/981.full.pdf>.
- Massimo Massa, Bohui Zhang, and Hong Zhang. The invisible hand of short selling: Does short selling discipline earnings management? *Review of Financial Studies*, 2014. URL <http://rfs.oxfordjournals.org/content/early/2014/12/23/rfs.hhu147.abstract>.



Pedro A. C. Saffi and Kari Sigurdsson. Price efficiency and short selling. *Review of Financial Studies*, 3:821–852, 2011. URL <http://rfs.oxfordjournals.org/content/24/3/821.short>.

Table 1 – Descriptive statistics of market indexes

<b>Market Index</b>	<b>Mean</b>	<b>Median</b>	<b>Std. Dev</b>	<b>Asymmetry</b>	<b>Skewness</b>	<b>Obs</b>
NEFIN Market Factor	0.00070	0.00105	0.0161	0.0580	8.863	3281
IBrX-100	0.00071	0.00104	0.0168	0.0977	9.308	3281
Ibovespa	0.00053	0.00092	0.0185	0.0604	7.582	3281

This table presents summary statistics on market indexes daily returns. IBrX-100 and Ibovespa are promoted by BM&FBOVESPA, NEFIN Market Factor is available on the NEFIN website. A mean daily return of 0.0007 indicates a mean annual return of 19.28%. Apart of a variation in asymmetry, both NEFIN index and IBrX-100 are relatively similar. Data used is from 2000 to 2014.

Table 2 – Correlation between Brazilian market indexes

<b>Correlation</b>	<b>NEFIN Market Factor</b>	<b>IBrX-100</b>	<b>Ibovespa</b>
NEFIN Market Factor	1		
IBrX-100	0.9937	1	
Ibovespa	0.9760	0.9706	1

This table shows the correlation of market index daily returns. IBrX-100 and Ibovespa are provided by BM&FBOVESPA, NEFIN Market Factor is available on the NEFIN website. High values can be found, an indication that the three indexes reflect similarly market returns. Data used is from 2000 to 2014.

Table 3 – Correlation between low frequency efficiency metrics

<b>Correlation</b>	$\rho^{cross}$	$\rho^1$	<b>D1</b>	<b>D2</b>
$\rho^{cross}$	1			
$\rho^1$	0.3922	1		
D1	0.4990	0.1985	1	
D2	0.4675	0.1103	0.8582	1

The table reports the correlation between low frequency efficiency index.  $\rho^{cross}$  is the correlation between stock returns and lagged returns of NEFIN Market Factor.  $\rho^1$  collects correlation between stock returns and its own lagged return in one period (first order correlation). D1 is the R2 ratio between an unrestricted and restricted model for stocks return. D2 is the beta ratio of the same models. The more efficient the price is, the closer to zero those indexes will be. Data used is from 2000 to 2014.

Table 4 – Efficiency portfolio characteristics from 2001 to 2014

		2001	2002	2003	2004	2005	2006	2007	2008	2009	2010	2011	2012	2013	2014	mean
Illiquidity Index	P1	0.0083	0.0133	0.0054	0.0044	0.0107	0.0076	0.0084	0.0193	0.0371	0.0097	0.0143	0.0133	0.0081	—	0.0123
	P2	0.0098	0.0151	0.0059	0.0062	0.0137	0.0084	0.0108	0.0684	0.0239	0.0159	0.1273	0.0139	0.0172	—	0.0259
	P3	0.0099	0.0091	0.0048	0.0100	0.0079	0.0131	0.0162	0.1349	0.0728	0.0209	0.0376	0.0253	0.0236	—	0.0297
	P4	0.0349	0.0218	0.0078	0.0083	0.0318	0.0176	0.0515	0.2321	0.0837	0.0233	0.0355	0.0764	0.0302	—	0.0504
BM	P1	1.13	1.27	1.50	0.76	0.59	0.43	0.65	0.64	0.72	0.64	0.68	0.87	0.84	0.98	0.84
	P2	0.70	1.57	0.84	0.90	0.52	0.77	0.40	0.56	0.62	0.61	0.71	0.82	1.15	1.05	0.80
	P3	1.20	0.68	0.85	0.56	0.92	0.42	0.40	0.59	0.70	0.54	0.55	0.55	0.81	1.00	0.70
	P4	1.24	0.86	0.65	0.45	0.51	0.37	0.25	0.49	0.45	0.45	0.49	0.42	0.48	0.50	0.54
Num. Deals	P1	222	277	399	582	587	799	1635	2738	2718	4368	7365	7066	9686	8709	3,368
	P2	294	169	244	369	438	835	883	1373	1619	2533	2303	5701	5816	5447	2,002
	P3	175	262	217	345	530	479	789	777	2035	1871	2241	3178	3655	5440	1,571
	P4	93	149	213	289	265	368	277	573	1304	1125	1412	2317	2568	2352	950
Market Value (R\$ M)	P1	6253	3931	5687	14409	9317	23677	24968	27554	20089	34192	31998	17761	29945	20749	19,323
	P2	5183	2979	3198	7951	12589	13958	18079	10300	8701	11080	12967	21160	12015	10281	10,746
	P3	2746	5277	4550	4242	13499	5099	12140	7564	12831	7266	6821	9482	7929	13856	8,093
	P4	1928	4301	6667	3873	4302	7501	3100	3702	3964	5543	4752	7814	4971	3025	4,674
Volume (R\$ M)	P1	8036	11384	16512	32212	22543	39123	88589	94969	52636	100761	109454	60524	101893	83078	58,694
	P2	14197	4381	8460	12222	19617	39240	32325	31326	30270	35545	24025	70628	45421	35810	28,819
	P3	5779	8211	6681	10632	28472	15149	29330	16315	41561	25049	20024	29968	25542	39573	21,592
	P4	1823	5770	8759	7543	8499	13757	11007	13496	20383	12789	15763	20992	19511	10628	12,194

P1 to P4 are portfolios with efficiency sorted stocks. First, it is calculate low frequency efficiency indexes of each stock traded in a particular year  $t$ ; with these values, the stocks are ranked, then divided into quartiles by its efficiency index mean; each quartile becomes a portfolio (P1, P2, P3 and P4), being P1 composed of stocks of the most efficient quartile and P4 of stocks from the less efficient quartile. These portfolios are kept from the first to the last working day of the year  $t + 1$ , registering its returns; at the beginning of  $t + 2$ , the portfolios are rebalanced based on indexes calculated over the period  $t + 1$ . The portfolios measures are: Illiquid Index calculated based on [Acharya and Pedersen \[2004\]](#); BM that is the book to market ratio of the portfolio; Num. Deals, the sum of all stock deals of each portfolio in that year; Market Value, the end of period market value of the portfolio (sum of market value of each stock that composes it), values in R\$ M; Volume, the sum of price times traded quantity for each stock in the portfolio, values in R\$ M. Data used is from 2000 to 2014.  $\square$

Table 5 – Efficiency sorted portfolios - Regression results

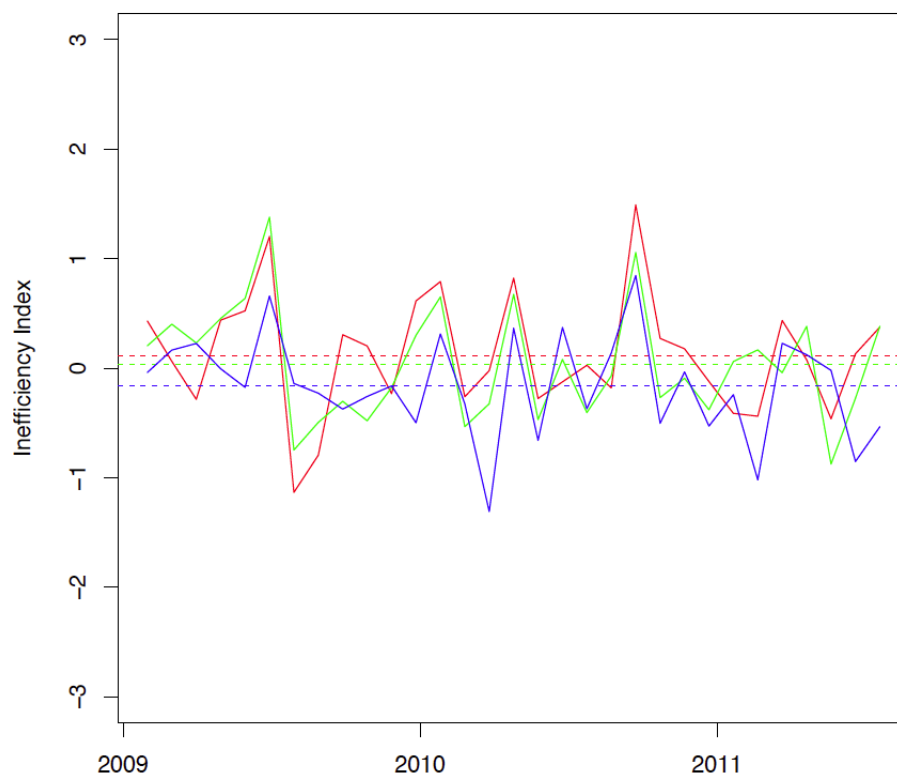
VARIABLES	P1	P2	P3	P4	P4 - P1
$r_m^e$	0.996*** (0.00732)	0.926*** (0.00757)	0.879*** (0.00809)	0.872*** (0.00882)	-0.124*** (0.0106)
SMB	0.188*** (0.0152)	0.175*** (0.0158)	0.220*** (0.0168)	0.369*** (0.0184)	0.181*** (0.0222)
HML	0.154*** (0.0114)	0.0581*** (0.0118)	0.0147 (0.0126)	-0.0607*** (0.0137)	-0.215*** (0.0166)
WML	-0.164*** (0.00976)	-0.0987*** (0.0101)	-0.0405*** (0.0108)	0.00458 (0.0118)	0.169*** (0.0142)
IML	-0.0966*** (0.0154)	-0.0307* (0.0159)	0.0688*** (0.0170)	0.0652*** (0.0185)	0.162*** (0.0224)
Constant	0.000100 (0.000101)	0.000160 (0.000104)	0.000221** (0.000111)	0.000239** (0.000121)	0.000138 (0.000146)
Observations	3,281	3,281	3,281	3,281	3,281
R-squared	0.894	0.864	0.822	0.788	0.256

Standard errors in parentheses

\*\*\* p<0.01, \*\* p<0.05, \* p<0.1

The table reports the regression results of P1 to P4 and P1-P4 on the main risk factors of financial literature. P1 to P4 are portfolios with efficiency sorted stocks. P1 is composed of stocks of the most efficient quartile and P4 stocks from the less efficient quartile, yearly balanced. P4 - P1 is a zero cost portfolio that buys P4 and sells P1. The return series of each of these 5 portfolios is the dependent variable in each respective column. As explaining variables are used:  $r_m^e$ , NEFIN market factor discounted the Brazilian risk free rate (SELIC), what generates a market index excess of return; SMB is the return of a Small minus Big portfolio, i.e., a zero cost portfolio that buys stocks of small companies and sells big companies stocks; HML is the return of a high book to market stocks minus low book to market stocks, i.e., a zero cost portfolio that buys *value* companies and sells *growth* companies stocks; WML is the zero cost portfolio return of a *winner* minus *loser* stocks, winners and losers are defined based on momentum; IML is the zero cost portfolio return of illiquid minus liquid stocks. Explaining variables source is NEFIN web site. Standard errors are in parentheses. Data used is from 2000 to 2014.

Figure 1 – Inefficiency index over time, 3 portfolio sorted by fee



X-axis is the years that comprise the database, Y-axis is the value of the inefficiency index (the higher the value, the more inefficient the portfolio price). The red line represents the portfolio made from stocks that have shown the highest equity lending fee (more constrained stocks). The blue line refers to the portfolio made from stocks with the lowest equity lending fee (less constrained); the green portfolio is made from intermediate stocks. The dashed lines mark the inefficiency index mean to its respective portfolio over the entire period. Portfolios were monthly balanced. Data used is from 2009 to July 2011.

Table 6 – Impacts of short selling constraints on price efficiency -  
Low Frequency Analysis

VARIABLES	1 D1	2 D1	3 D2	4 D2
Loan Fee	0.0425*** (0.0135)	0.0402*** (0.0138)	0.0379*** (0.0136)	0.0367*** (0.0138)
dJSCP	0.0528 (0.0390)	0.0577 (0.0392)	0.0586 (0.0391)	0.0633 (0.0394)
Size		0.00134 (0.0189)		-0.00243 (0.0187)
Ret0		0.0449*** (0.0145)		0.0514*** (0.0143)
Constant	-0.0442 (0.0786)	-0.0480 (0.0871)	-0.137 (0.0840)	-0.148 (0.0924)
Observations	4,803	4,640	4,803	4,640
R-squared	0.128	0.130	0.111	0.113

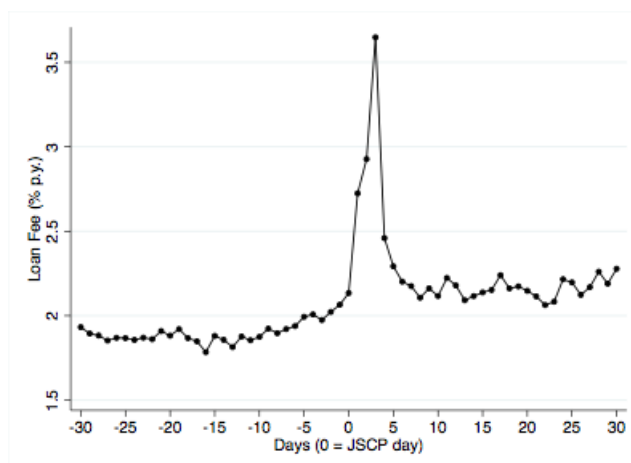
Robust standard errors in parentheses

\*\*\*  $p < 0.01$ , \*\*  $p < 0.05$ , \*  $p < 0.1$

The table reports the regression results of D1 and D2 on Loan Fee and others controls for a panel data of stocks from 2009 to July 2011. D1 (R2 ratio) and D2 (Betas ratio), dependent variables, are efficiency index described on section 4. As explicative, it's used average Loan Fee - a proxy for short selling constraints; the dummy of interest on net equity payment (dJSCP) is 1 if the payment was done in that month for that stock, 0 other wise; Size is the firm market capitalization; Ret0 is the ratio of days without trade of a ticker over working days in the month - a proxy for illiquidity. Variables, except the dummy, are standardized to have 0 mean and standard deviation of 1. The model uses fixed effects to stocks and months. The regression was performed with two models. The first (columns 1 and 3) does not control effects of size and illiquidity, the second (columns 2 and 4) consider it. Columns 1 and 2 use as a dependable variable D1 index, columns 3 and 4 handle index D2.

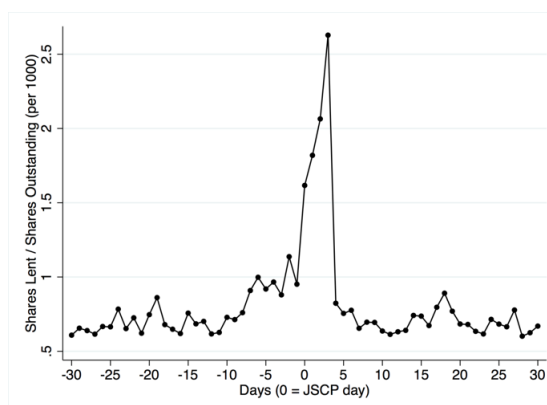


Figure 2 – Event Study - Loan fee around interest on net equity payment



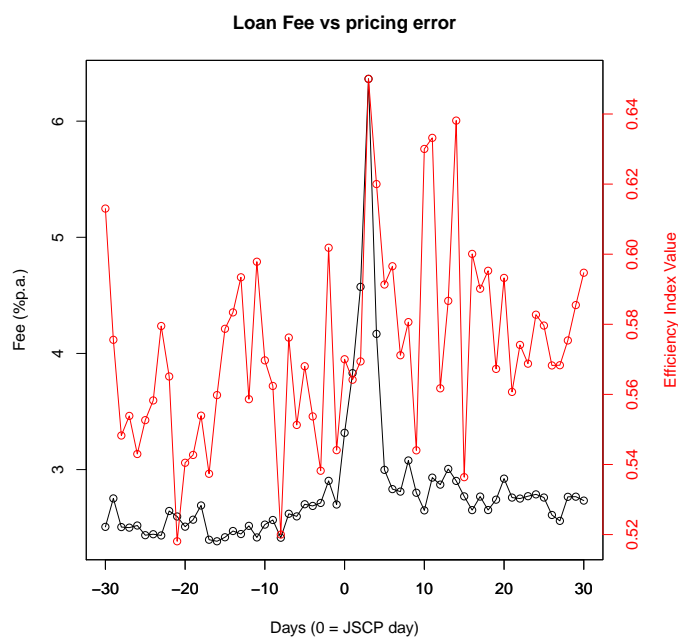
X-axis is days around interest on net equity payment (day 0), Y-axis is the average loan fee charged on equity lending deals at %p.a. The "JSCP day" (in-INE date) is the last day to have the stock and qualify to receive the interest on net equity. Due settlement in D+3 in the spot market, the definition of who receives the gain value will be based on stocks held in custody on day 3 (3 days after in-INE). Data used is from 2009 to July 2011.

Figure 3 – Event Study - Lended equity quantity around interest on net equity payment



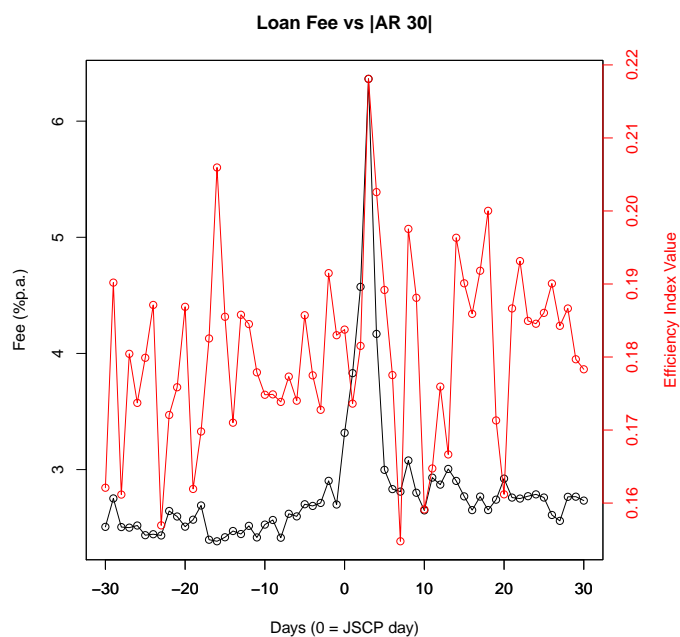
X-axis is days around interest on net equity payment (day 0), Y-axis is the value of the ratio between the amounts of equities lent and total amount of stocks available to be dealt. The "JSCP day" (in-INE date) is the last day to have the stock and qualify to receive the interest on net equity. Due settlement in D+3 in the spot market, the definition of who receives the gain value will be based on stocks held in custody on day 3 (3 days after data-com). Data used is from 2009 to July 2011.

Figure 4 – Loan fee (left axis) and pricing error (right axis) - Closing values from intraday intervals of 15 minutes



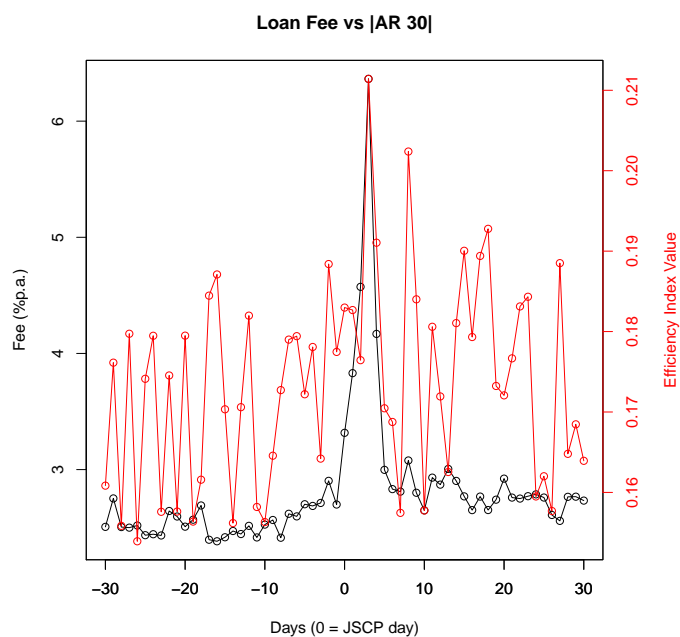
X-axis is days around a interest on net equity payment (day 0), Y-axis (left) is average loan fee charged on equity lending deals at %p.a., Y-axis (right) is average pricing error index, i.e., ratio between pricing error variance and stock variance. Closing values of intraday intervals of 15 minutes were used on calculation. The lower the index is, more efficient stock price will be. Data used is from 2009 to July 2011.

Figure 5 – Loan fee (left axis) and  $|AR30|$  (right axis) - Closing values from intraday intervals of 30 minutes



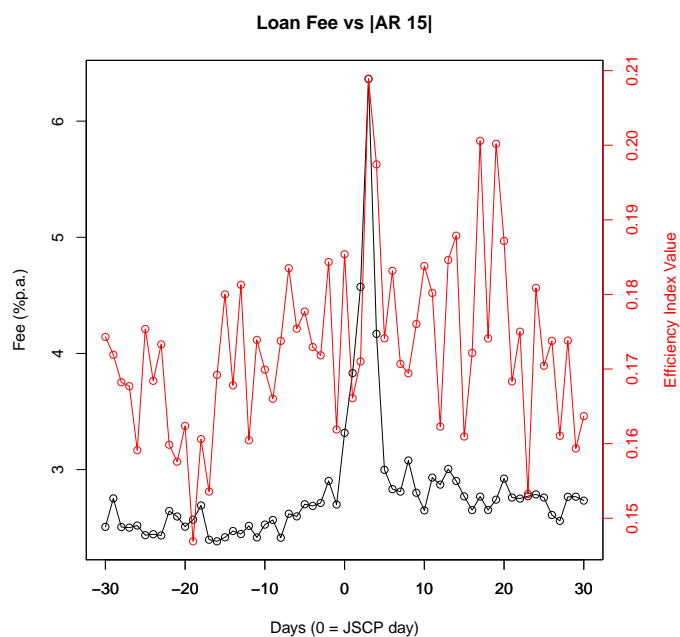
X-axis is days around a interest on net equity payment (day 0), Y-axis (left) is average loan fee charged on equity lending deals at %p.a., Y-axis (right) is average first order autocorrelation. Closing values of intraday intervals of 30 minutes were used on calculation. The lower the index is, more efficient stock price will be. Data used is from 2009 to July 2011.

Figure 6 – Loan fee (left axis) and  $|AR30|$  (right axis) - Average values between opening and closing from intraday intervals of 30 minutes



X-axis is days around a interest on net equity payment (day 0), Y-axis (left) is average loan fee charged on equity lending deals at %p.a., Y-axis (right) is average first order autocorrelation. Average values between opening and closing from intraday intervals of 30 minutes were used on calculation. It was done to prevent "bid-ask bounce". The lower the index is, more efficient stock price will be. Data used is from 2009 to July 2011.

Figure 7 – Loan fee (left axis) and  $|AR15|$  (right axis) - Average values between opening and closing from intraday intervals of 15 minutes



X-axis is days around a interest on net equity payment (day 0), Y-axis (left) is average loan fee charged on equity lending deals at %p.a., Y-axis (right) is average first order autocorrelation. Average values between opening and closing from intraday intervals of 15 minutes were used on calculation. It was done to prevent "bid-ask bounce". The lower the index is, more efficient stock price will be. Data used is from 2009 to July 2011.

Table 7 – Mean test around interest on net equity payment date - High Frequency Analysis

VARIABLES	1 BN close value	2  AR30  close value	3  AR30  open-close mean	4  AR15  open-close mean
D-4	-0.0415 (0.0387)	-0.00225 (0.0158)	0.00564 (0.0151)	0.0016 (0.0142)
D-3	-0.041 (0.0389)	-0.00697 (0.0156)	-0.00823 (0.015)	0.000485 (0.0141)
D-2	0.0227 (0.0389)	0.0117 (0.0155)	0.016 (0.0149)	0.013 (0.0141)
D-1	-0.034 (0.0386)	0.00324 (0.0155)	0.00503 (0.0149)	-0.00946 (0.014)
D+0	-0.00764 (0.0389)	0.00401 (0.0152)	0.0105 (0.0146)	0.014 (0.0139)
D+1	-0.015 (0.0385)	-0.00613 (0.0155)	0.0102 (0.0149)	-0.00526 (0.0139)
D+2	-0.00199 (0.0377)	0.00178 (0.0154)	0.004 (0.0147)	-0.000338 (0.0136)
D+3	0.0722* (0.0379)	0.0383** (0.0157)	0.0390*** (0.0151)	0.0375*** (0.0139)
D+4	0.0408 (0.0382)	0.0228 (0.0155)	0.0186 (0.0149)	0.0261* (0.0137)
D+5	0.0127 (0.0393)	0.00944 (0.0156)	-0.00198 (0.015)	0.00276 (0.0141)
D+6	0.0201 (0.0383)	-0.00222 (0.0156)	-0.00368 (0.015)	0.0118 (0.0139)
D+7	-0.00596 (0.0384)	-0.025 (0.0158)	-0.015 (0.0151)	-0.000665 (0.014)
D+8	-0.0352 (0.039)	0.0124 (0.0157)	0.0292* (0.0155)	-0.00193 (0.014)
Constant	0.579*** (0.00551)	0.180*** (0.00223)	0.172*** (0.00214)	0.171*** (0.00200)
Observations	19,889	22,075	22,075	22,075
R-squared	0.000	0.001	0.001	0.001

Standard errors in parentheses

\*\*\*  $p < 0.01$ , \*\*  $p < 0.05$ , \*  $p < 0.1$

The table reports a high frequency efficiency index mean test between the days around interest on net equity payment (D+0). Constant value represents the efficiency index mean on days that are not explicit tabulated. Variable coefficients are the difference between the efficiency index for that specific day and the constant. Beveridge Nelson pricing error index are used on column 1; |AR30| index with closing values on column 2; column 3(4) shows results for |AR30|(|AR15|) calculated with the mean value between opening and closing prices of data interval. Data used is from 2009 to July 2011.